

First Grade “Introduction to Electricity” Assessment

1a. What makes your hair stand up when we rub it with a filled balloon?
a. lightning
b. static electricity

1b. What makes your hair stand up when we rub it with a filled balloon?
a. lightning
b. static electricity
c. current

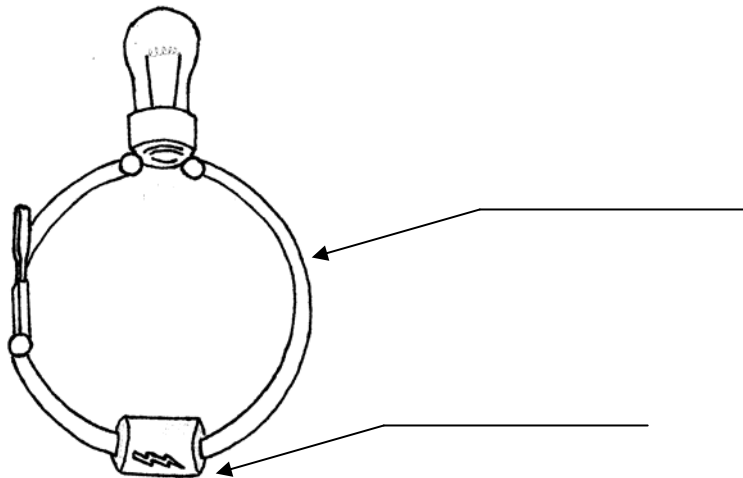
1c. What makes your hair stand up when we rub it with a filled balloon?

2a. What makes the lights in our house work?
a. lightning
b. electricity

2b. Where does the power come from to light our homes?
a. lightning
b. power company
c. clouds

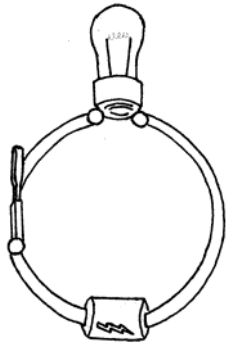
2c. Tell how power comes to your house to make the lights work.

3a. Write the name beside each part of the picture.
battery wire

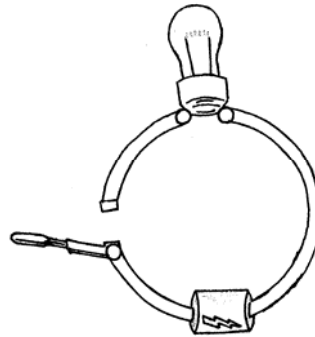


4b. Label each picture either open or closed.

a. _____



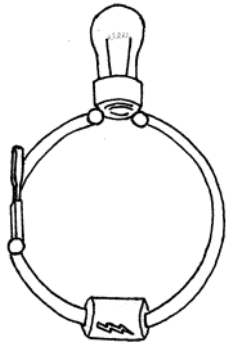
b. _____



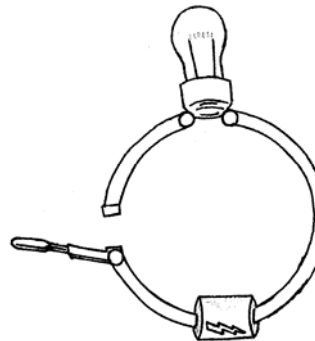
4c. Draw a picture of a completed circuit. Be sure to show each of these parts:
battery bulb wire switch

5a. Which picture shows the switch is off?

a.

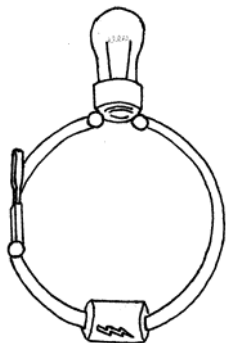


b.

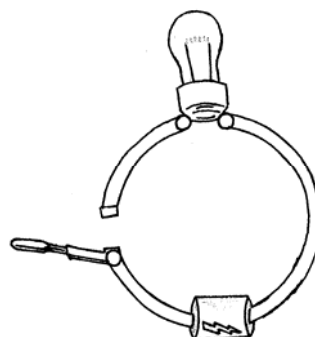


5b. Label each picture either on or off.

a. _____



b. _____



5c. Draw a picture of a complete circuit where the switch is off.

6a. Which will conduct electricity?

a. copper

b. wood

6b. Which is a conductor of electricity?

a. copper

b. wood

c. dirt

d. rubber

6c. Name two things which will conduct electricity:

1. _____

2. _____

7a. Which of these statements is true?

a. A conductor of electricity will not let electricity pass through.

b. A conductor of electricity will let electricity pass through.

7b. A conductor of electricity (will or will not) let electricity pass through. Circle the correct answer.

7c. Tell what a conductor of electricity will do.

8a. Who is famous for flying a kite to find out about electricity?

a. Louis Pasteur

b. Ben Franklin

8b. Who is famous for flying a kite to find out about electricity?

a. Louis Pasteur

b. Thomas Jefferson

c. Ben Franklin

8c. Who is famous for flying a kite to find out about electricity?

9a. Who invented the light bulb?
a. Thomas Edison
b. Ben Franklin

9b. Who invented the light bulb?
a. Thomas Jefferson
b. Thomas Edison
c. Ben Franklin

9c. Who invented the light bulb?

10a. What else did the inventor of the light bulb invent?
a. movies
b. telephone

10b. What else did the inventor of the light bulb invent?
a. movies
b. cars
c. telephone
d. airplanes

10c. Name another invention by the same man who invented the light bulb.

11a. Which is a safe thing to do?
a. plug in a hair dryer
b. use the hair dryer when your are standing in water

11b. Which is a safe thing to do?
a. plug in a hair dryer
b. use the hair dryer when you are standing in water
c. poke a key into an electrical outlet on the wall

11c. Name a safety rule about electricity that you should NOT do because it is dangerous.

The following Colorado Model Content Standards are addressed in this assessment by the questions indicated:

None

Answer Key

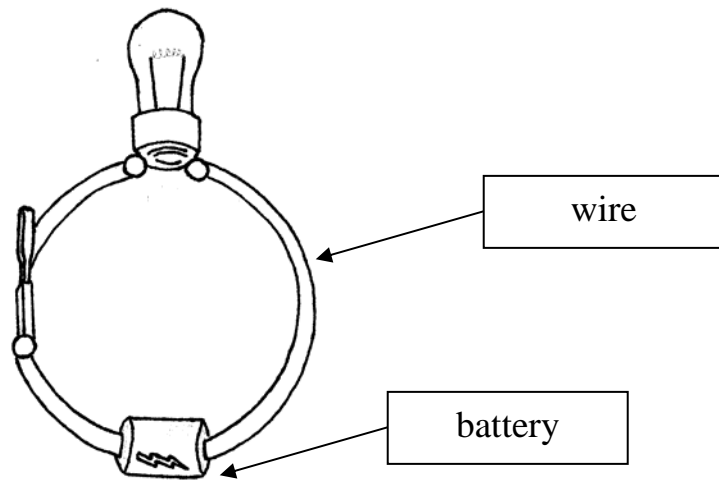
- 1a. b. static electricity
- 1b. b. static electricity
- 1c. static electricity

- 2a. b. electricity
- 2b. b. power company

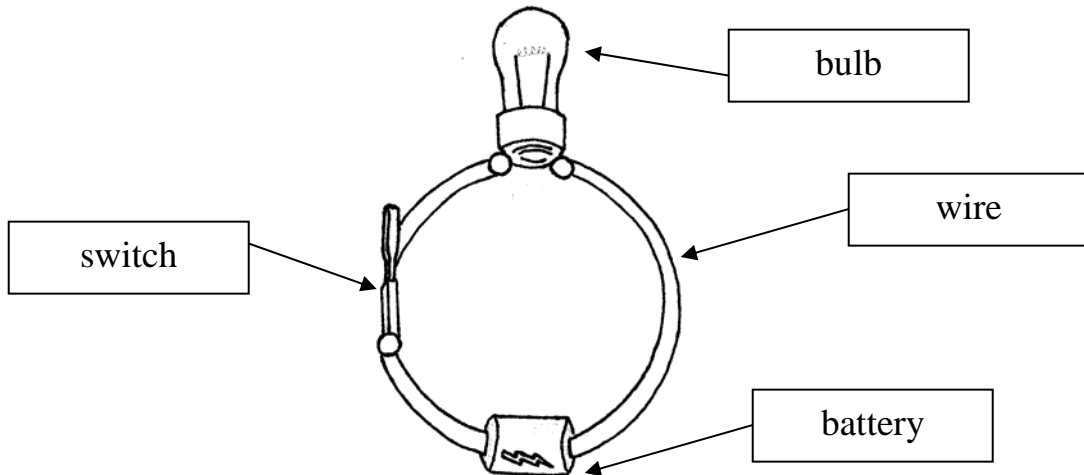
2c. Acceptable answers could include:

-The power company makes electricity and sends it through wires into our home.

3a.

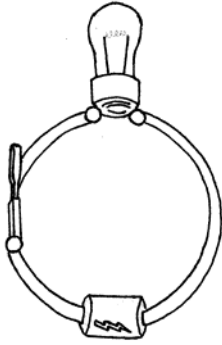


3b.



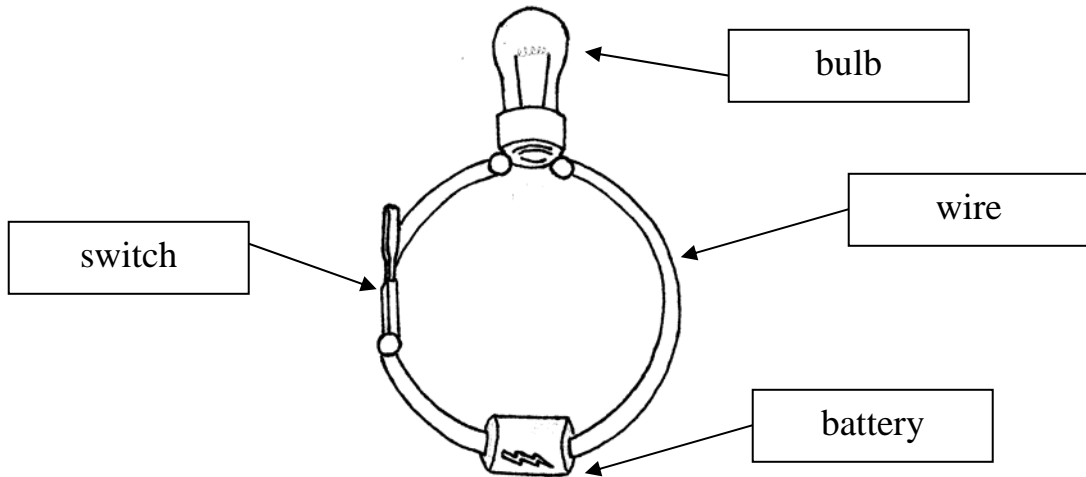
3c. see 3b.

4a. a.

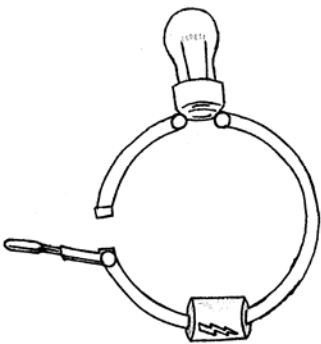


4b. a. closed
b. open

4c.

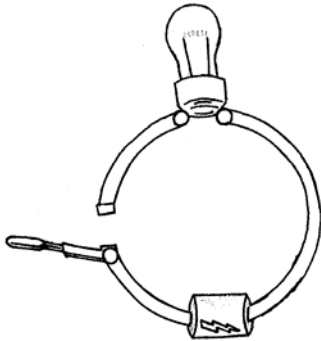


5a. b.



5b. a. on
b. off

5c.



- 6a. a. copper
- 6b. a. copper
- 6c. copper, water

- 7a. b. A conductor of electricity will let electricity pass through.
- 7b. will
- 7c. Acceptable answers could include:
 - A conductor of electricity will let electricity pass through.

- 8a. b. Ben Franklin
- 8b. c. Ben Franklin
- 8c. Ben Franklin

- 9a. a. Thomas Edison
- 9b. b. Thomas Edison
- 9c. Thomas Edison

- 10a. a. movies
- 10b. a. movies
- 10c. Acceptable answer could include:
 - movies
 - movie projector
 - phonograph

- 11a. a. plug in a hair dryer
- 11b. a. plug in a hair dryer
- 11c. Acceptable answers could include:
 - don't stick anything but a plug into the electrical outlet in the wall
 - don't touch electrical appliances when you are wet
 - don't stick anything but a bulb into a lamp socket